

~~274.000€~~ → 263.000€\*

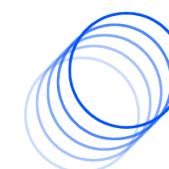
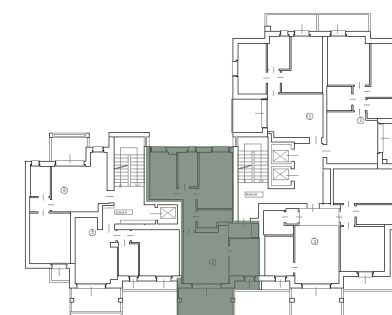
+ nessuna provvigione  
\*Condizioni valide fino al 24/05



RESIDENZA  
**PARCO**  
NATURALLY LIFE

**UNITÀ 1A-6-4**  
EDIFICIO 1A  
PIANO SESTO

MQ COPERTI (100%)	81,70	81,70
MQ BALCONI FINO A 20 MQ (50%)	19,40	9,70
MQ BALCONI FINO A 40 MQ (20%)		
MQ BALCONI FINO OLTRE 40 MQ (5%)		
MQ GIARDINI (5%)		
MQ CANTINA (FORFAIT)		2,50
<b>MQ COMMERCIALI TOTALI</b>		<b>99,38</b>



**Oneshot**  
Real Estate Solutions